



# Red Hook Library

LEVENBETTS

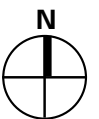
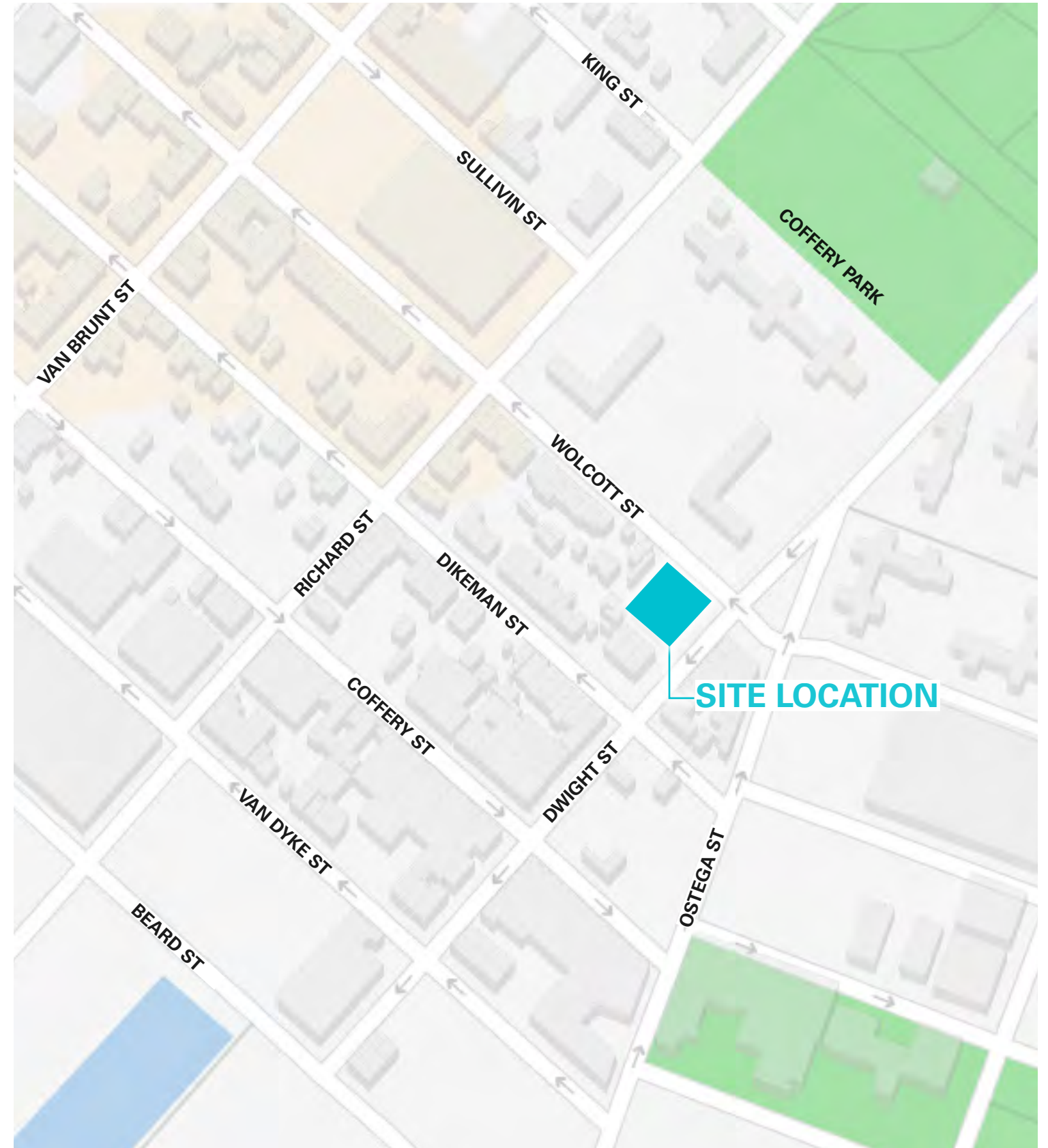
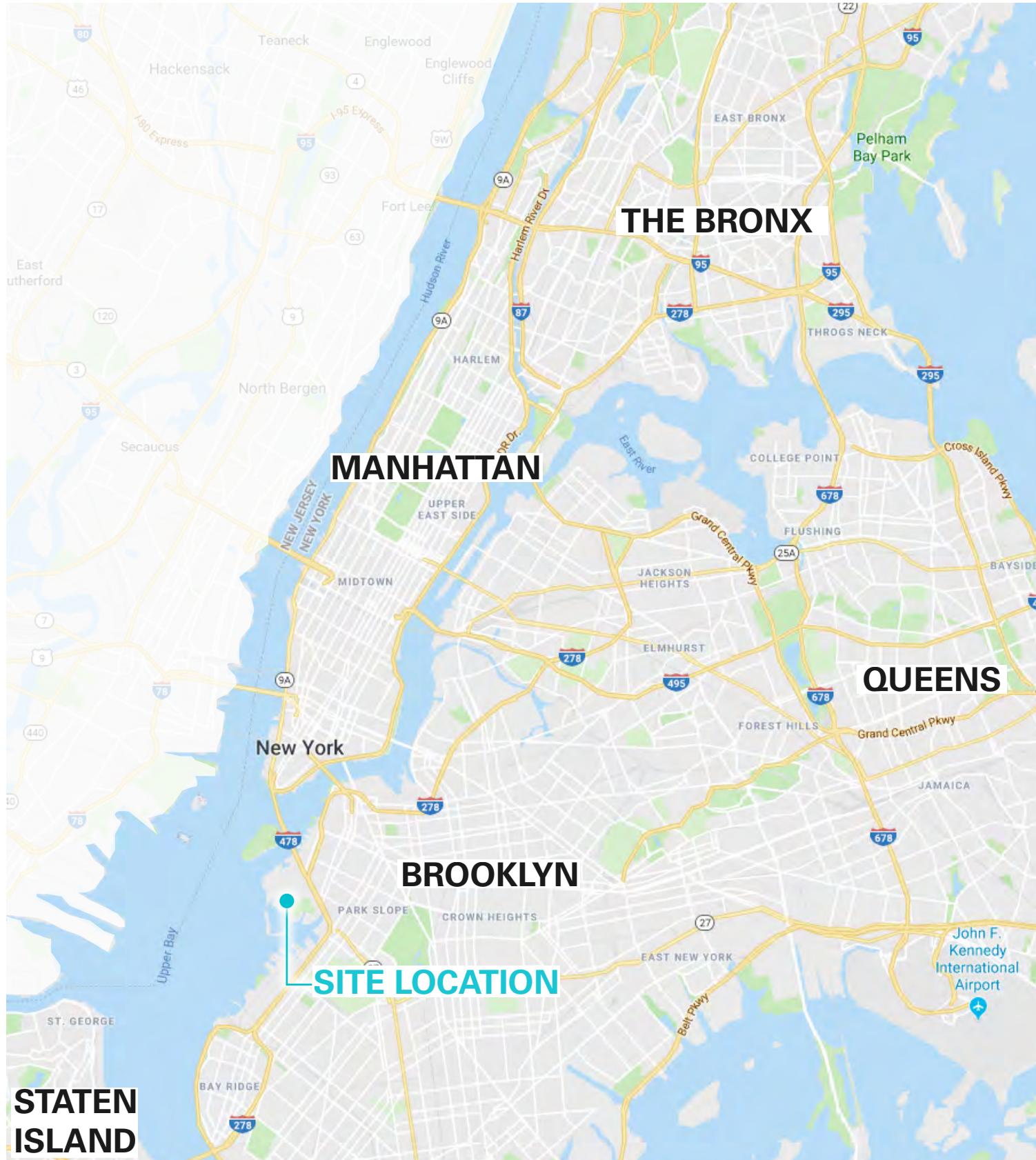
**Bklyn**  
Public Library

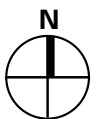
**NYC / EDC**

Red Hook Library Renovation

February 21, 2023

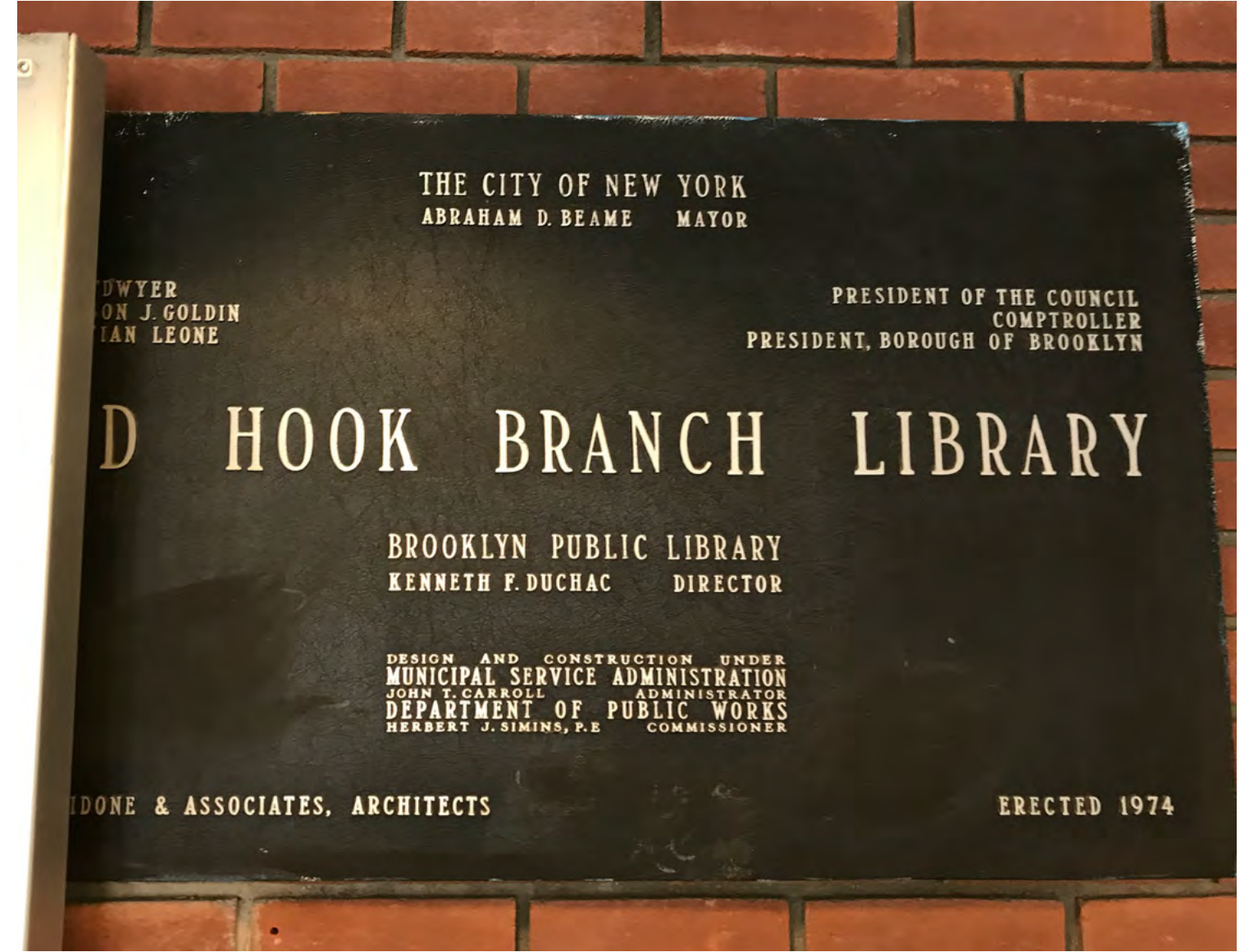
Community Presentation







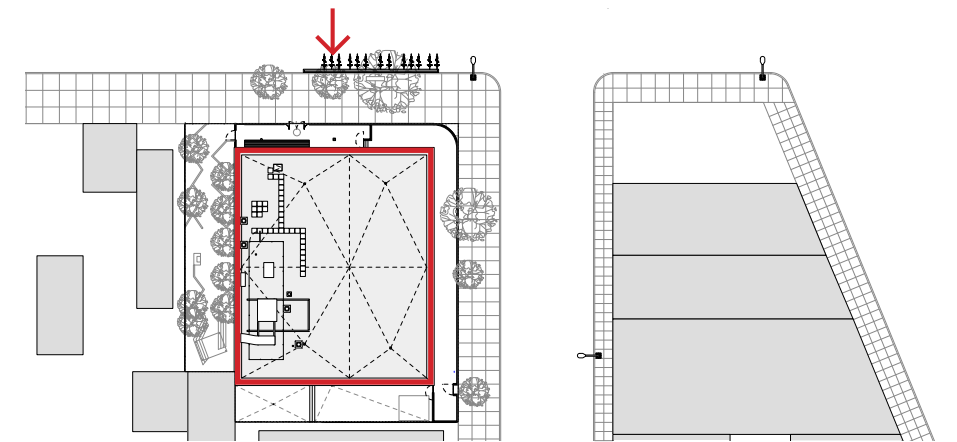
Original Library Facade Photograph c. 1915



Current Library Built 1974

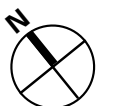
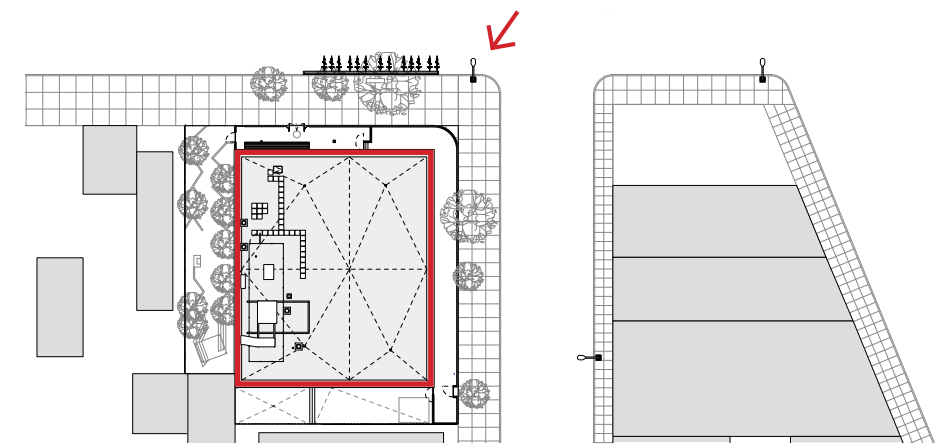


View from Wolcott Street



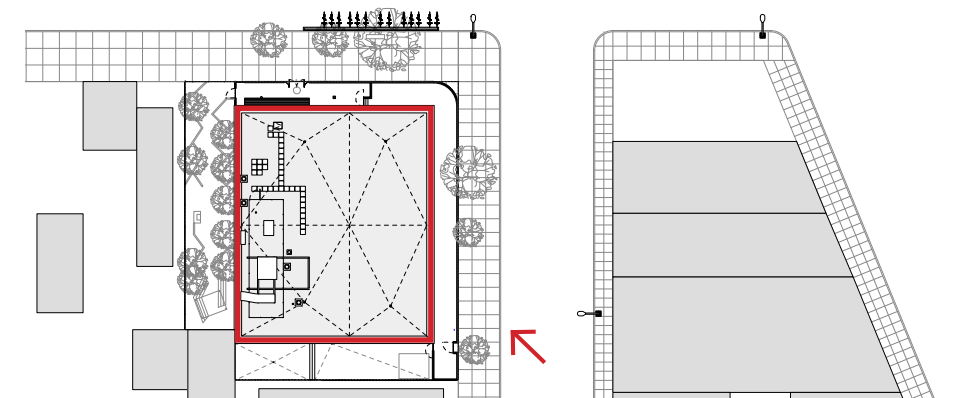


View from Corner of Wolcott Street & Dwight Street



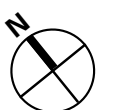
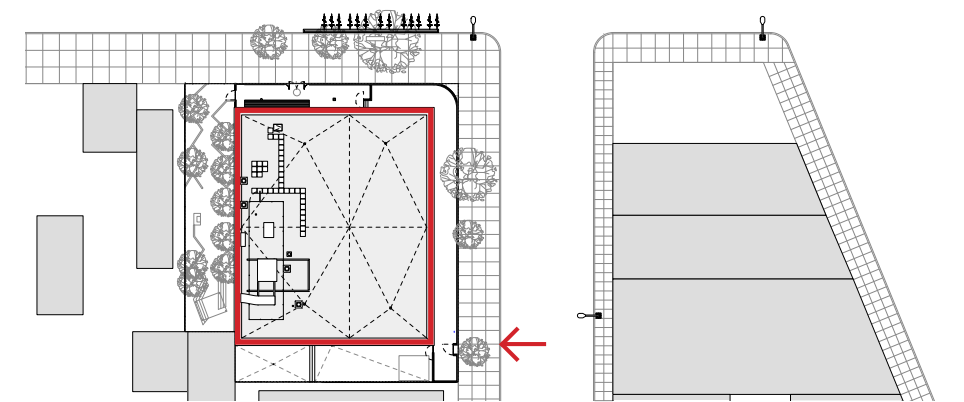


View from Dwight Street





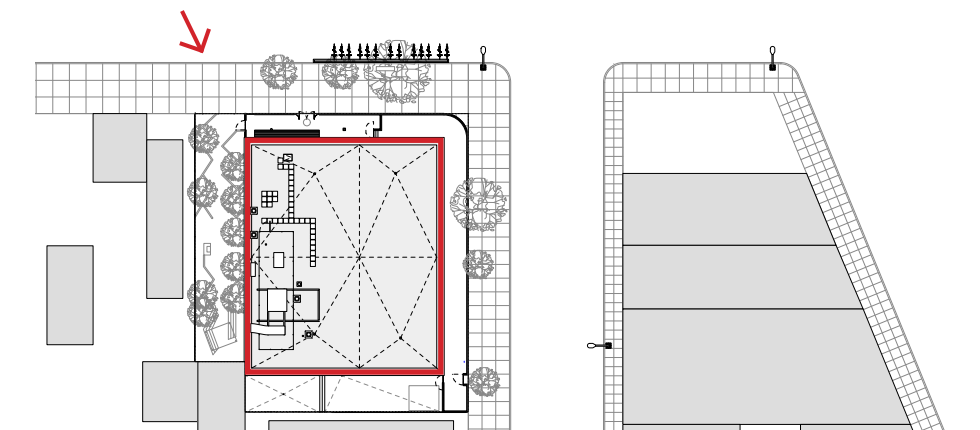
View from Dwight Street towards Rear Yard





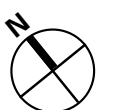
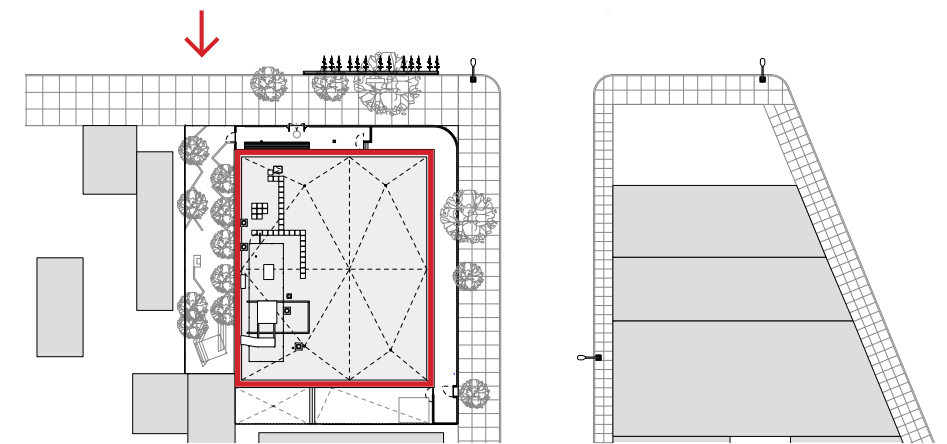


View from Wolcott Street towards Side Yard Garden





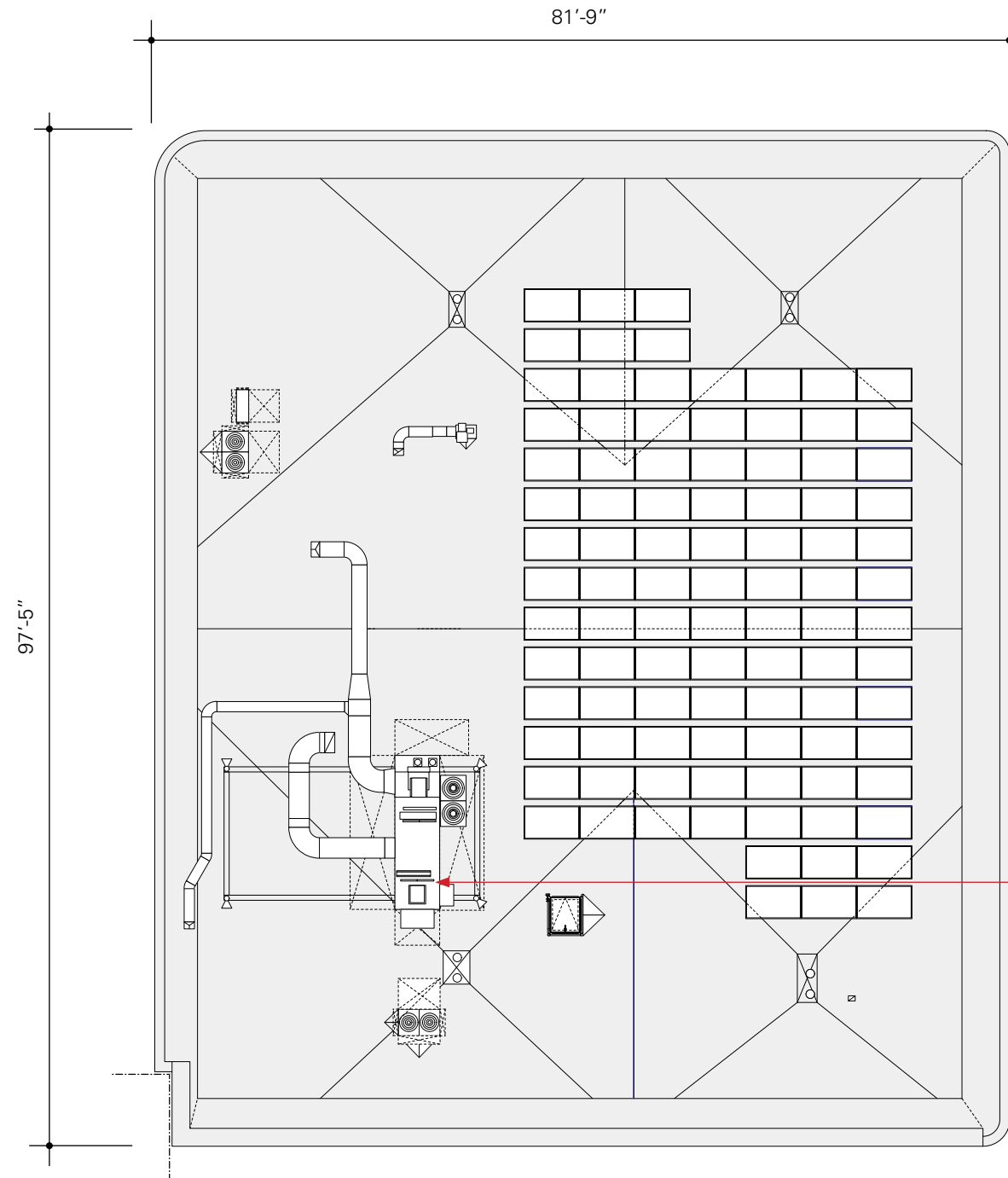
View of Side Yard Garden



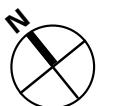


**Key:**

- 1 Entry Vestibule
- 2 Reading Room
- 3 Staff Office
- 4 Librarian's Office
- 5 Staff Lounge
- 6 Staff WC
- 7 Patron WC
- 8 Lactation Room
- 9 Meeting Room
- 10 Children's Room
- 11 Community Room
- 12 Janitor Closet
- 13 Storage
- 14 AV / IT Closet
- 15 Electrical Closet



**Revision #1**  
 Mechanical Equipment Shifted  
 to Existing Dunnage





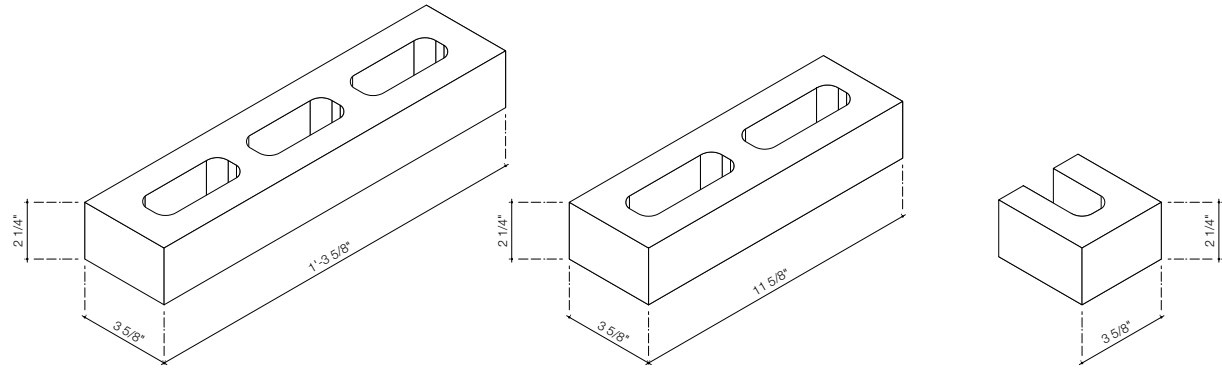








1



2



3



4



5



### Exterior Material Palette

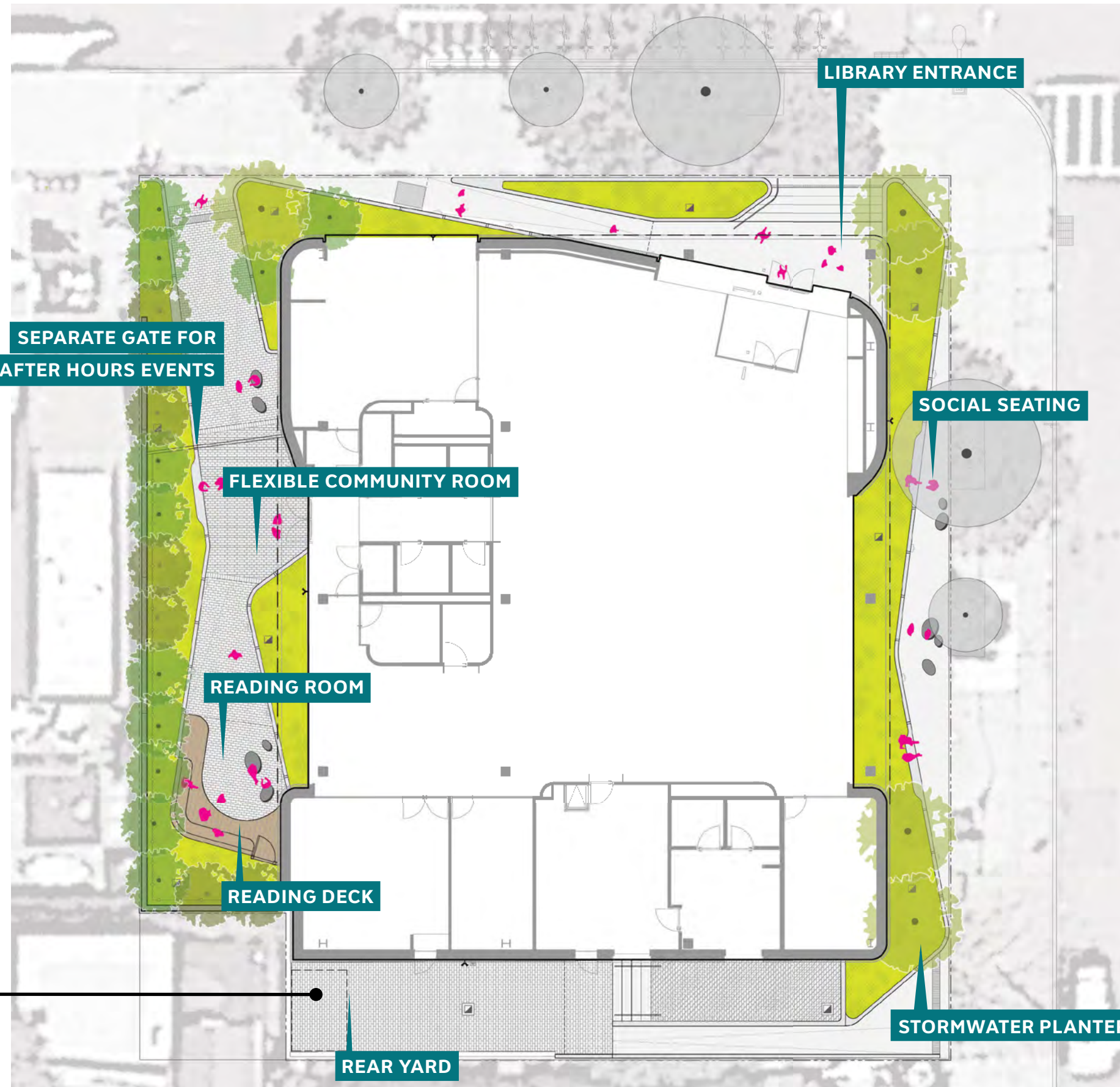
- 1 Brick Facade: Westbrook West Brick Sizes
- 2 Brick Facade: Westbrook West Brick in Overcast with Polished Face Texture
- 3 Triple Glazed Glass Panels: Vitro SB90
- 4 Window Frames, Facade Panels, Soffit Ceiling, Security Gates, Signage: Anodized Aluminum
- 5 Concrete Watertable: Westbrook Pre-Cast in Overcast with Smooth Molded Texture





# LANDSCAPE GOALS

- **VISUAL AND SPATIAL CONNECTION TO BUILDING DESIGN**
- **ENRICHING LANDSCAPE FOR LEARNING**
- **SPACES FOR FLEXIBLE ACTIVITIES**
- **INCREASED OUTWARD FOCUS TO SURROUNDING NEIGHBORHOOD**
- **ENHANCED WATER MANAGEMENT**
- **RESILIENT PLANTING PALETTE**
- **LOW MAINTENANCE LANDSCAPE**



**REVISION L1A**  
INTRODUCED NEW DESIGN AT REAR YARD





**EXPOSED AGGREGATE PRECAST PAVER  
STONE AGGREGATE IN CONCRETE**



**TINTED CONCRETE PAVING  
STANDARD DOT TINTED CONCRETE PAVING**



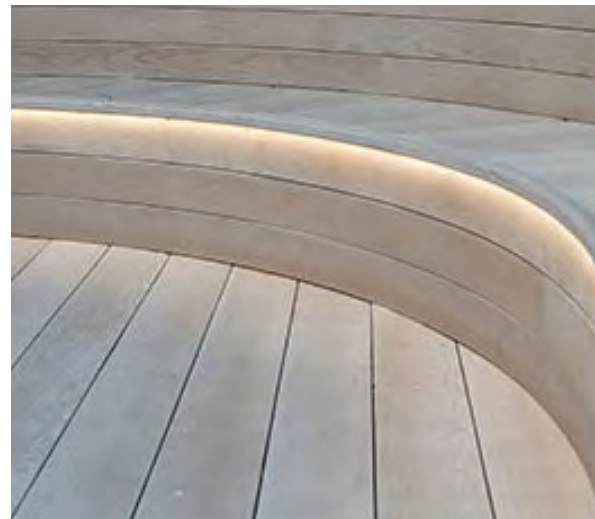
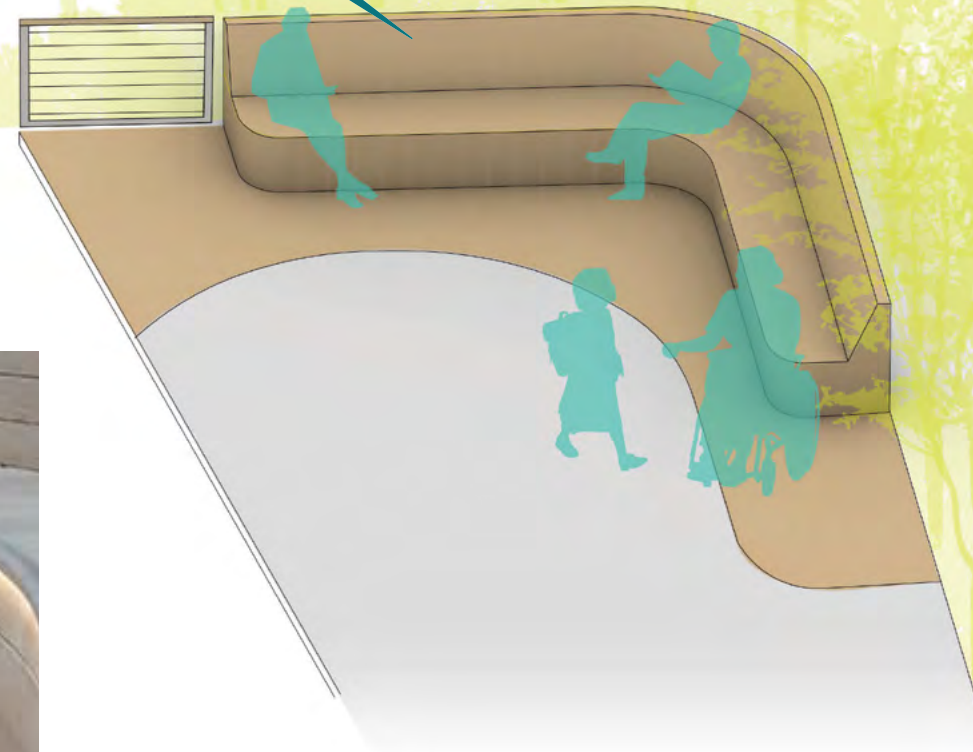
**FACADE MATERIAL AS PROPOSED BY ARCHITECT  
"WESTBRICK" CONCRETE BRICK**



**READING DECK AND SEAT  
PUTTY COLOR RECYCLED PLASTIC  
LUMBER (RPL) SLATS**

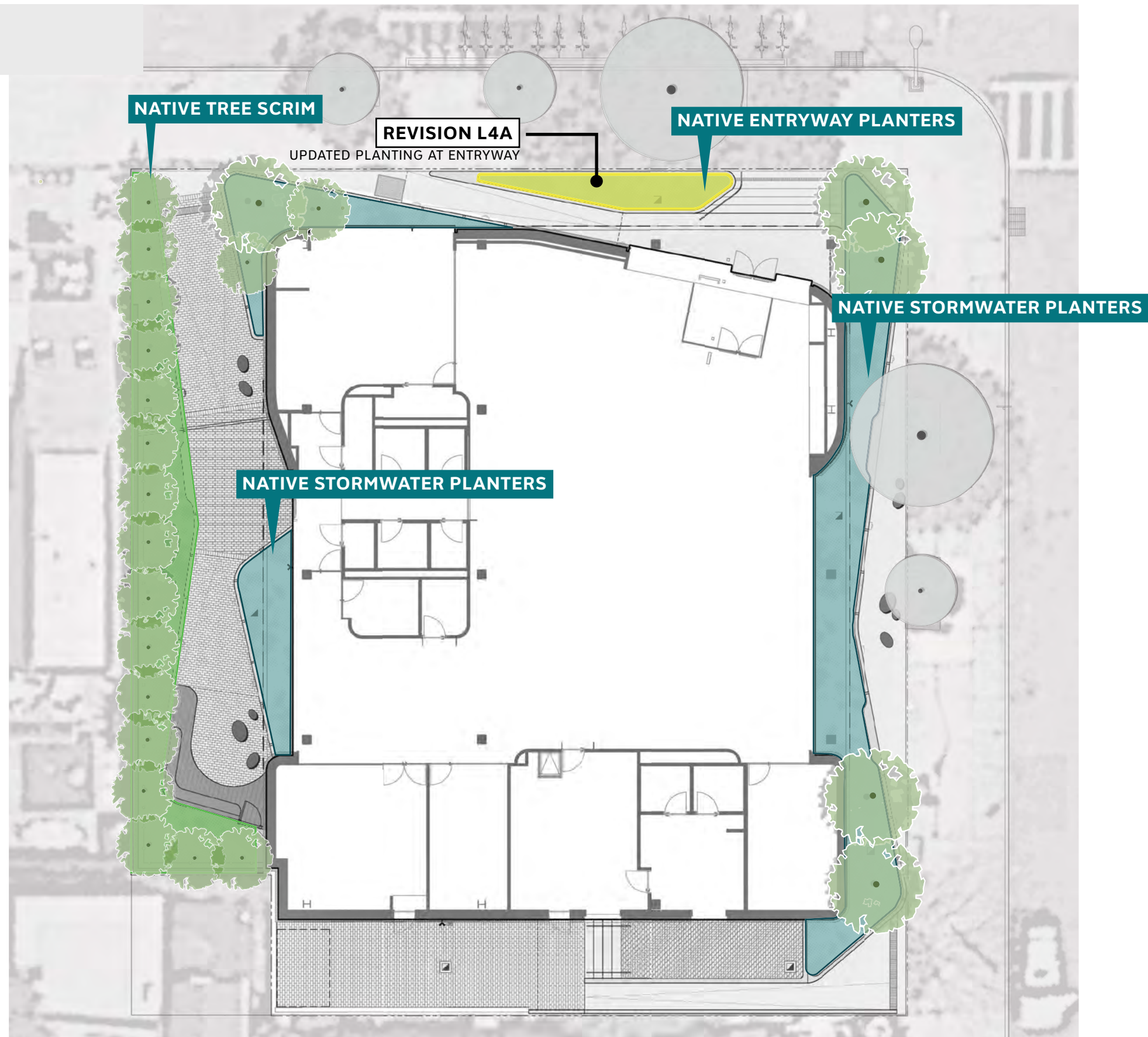







**KEYPLAN**



**PRECEDENT IMAGE**

**READING DECK / ROOM DESIGN CONCEPT**



-  PROPOSED TREES
-  EXISTING TREE
-  NATIVE TREE SCRIM
-  NATIVE STORMWATER PLANTING
-  NATIVE ENTRYWAY PLANTING







**SASSAFRAS**  
*SASSAFRAS ALBIDUM*



**EASTERN REDBUD**  
*CERCIS CANADENSIS*



**INKBERRY**  
*ILEX GLABRA*



**WILLOW-LEAVED SPICEBUSH**  
*LINDERA GLAUCA VAR. SALICIFOLIA*



**POSSUMHAW VIBURNUM**  
*VIBURNUM NUDUM*



**APPALACHIAN SEDGE**  
*CAREX APPALACHIA*



**BLACKGUM**  
*NYSSA SYLVATICA*



**RED TWIG DOGWOOD**  
*CORNUS SERICEA*



**INKBERRY**  
*ILEX GLABRA*



**WILLOW-LEAVED SPICEBUSH**  
*LINDERA GLAUCA* VAR. *SALICIFOLIA*



**ARROWWOOD VIBURNUM**  
*VIBURNUM DENTATUM*



**PENNSYLVANIA SEDGE**  
*CAREX PENNSYLVANICA*



**INKBERRY**  
*ILEX GLABRA*



**WILLOW-LEAVED SPICEBUSH**  
*LINDERA GLAUCA* VAR. *SALICIFOLIA*



**ARROWWOOD VIBURNUM**  
*VIBURNUM DENTATUM*



**RED TWIG DOGWOOD**  
*CORNUS SERICEA*



**PENNSYLVANIA SEDGE**  
*CAREX PENNSYLVANICA*



**BLOODROOT**  
*SANGUNARIA CANADENSIS*



**GRAPE HYACINTH**  
*MUSCARI ARMENIACUM*



**WHITE SQUILL**  
*SCILLA MISCHTSCHENKOANA*

**REVISION L4B** INTRODUCED SPRING EPHEMERALS AT ENTRY WAY